



DELAWARE
BOTANIC
GARDENS
AT PEPPER CREEK

Winter Newsletter

Contents

Behind the Scenes	1
Board & Futures Team Update	5
Volunteers & Speakers/Tours Bureau Update	6
Development Update	7
DBG People in the News	8
Contribute to DBG & Avoid Taxes	9
DBG Giving – All Hands on Deck	10
Naming Opportunities	10
Garden Naming Opportunities	11
In the Garden	13
Happy New Year!	14

Our roots are in the sands of coastal Delmarva

December 21, 2018

Behind the Scenes

News from President Ray Sander & Executive Director Sheryl Swed

Welcome to our Winter 2018 Newsletter. We want to thank all our DBG supporters for a great 2018. This past year we completed our crown jewel - the Piet Oudolf Meadow Garden, and the Welcome Center building is standing tall as the first structure in the Entry Garden. In addition, we have some other highlights we would like to share with you.

Volunteers – First, we salute our volunteers who make this legacy garden come to life every day. We are all volunteers from Board Members to the administrative volunteers who are involved in grant writing, fundraising activities, record keeping and mailings. Our online volunteers maintain our website, online records and online fundraising. Our communication team sends out the news releases, edits the quarterly newsletter and keeps the public informed about DBG. Some of our volunteers are involved in community outreach through our Speaker’s Bureau, and representing DBG in various community events. Our garden stewards plant and maintain the gardens, the Docents give tours, and the hospitality volunteers are now being trained to be the smiling faces at the new Welcome Center. We all are truly members of the DBG family, who depend on each other and will celebrate together this year when we open the garden gates in September.





In-Kind Support – We give thanks for the friends of the garden, who support us financially and the business community who give us major “in-kind” support, sharing their expertise at well below market prices or as “in-kind” contributions. The latest example of this business support is with the Welcome Center. We are proud to announce that as we ring in the new-year, we will begin work on the interior of the Welcome Center.

Welcome Center Interior Design – On November 12, 2018, Scott and Jen Edmonston briefed the Futures Team on their “vision” of the proposed interior design of the Welcome Center. Joining our DBG family, this award winning design team presented us with a pro-bono gift of their talents.

Scott Edmonston, AIA is the president and principal architect at SEA Studio Architects in Bethany Beach, DE. Scott started SEA in 2010 with a commitment to designing environmentally friendly buildings throughout Delaware and the Mid Atlantic that are sustainable, cost effective and beautiful. In that time, Scott’s work has been featured in regional and national publications and SEA Studio has received a number of design awards including, most recently, a Citation Award from the Delaware Chapter of the American Institute of Architects AIA) and the award for Best Modern Architecture from *Delaware Today*.

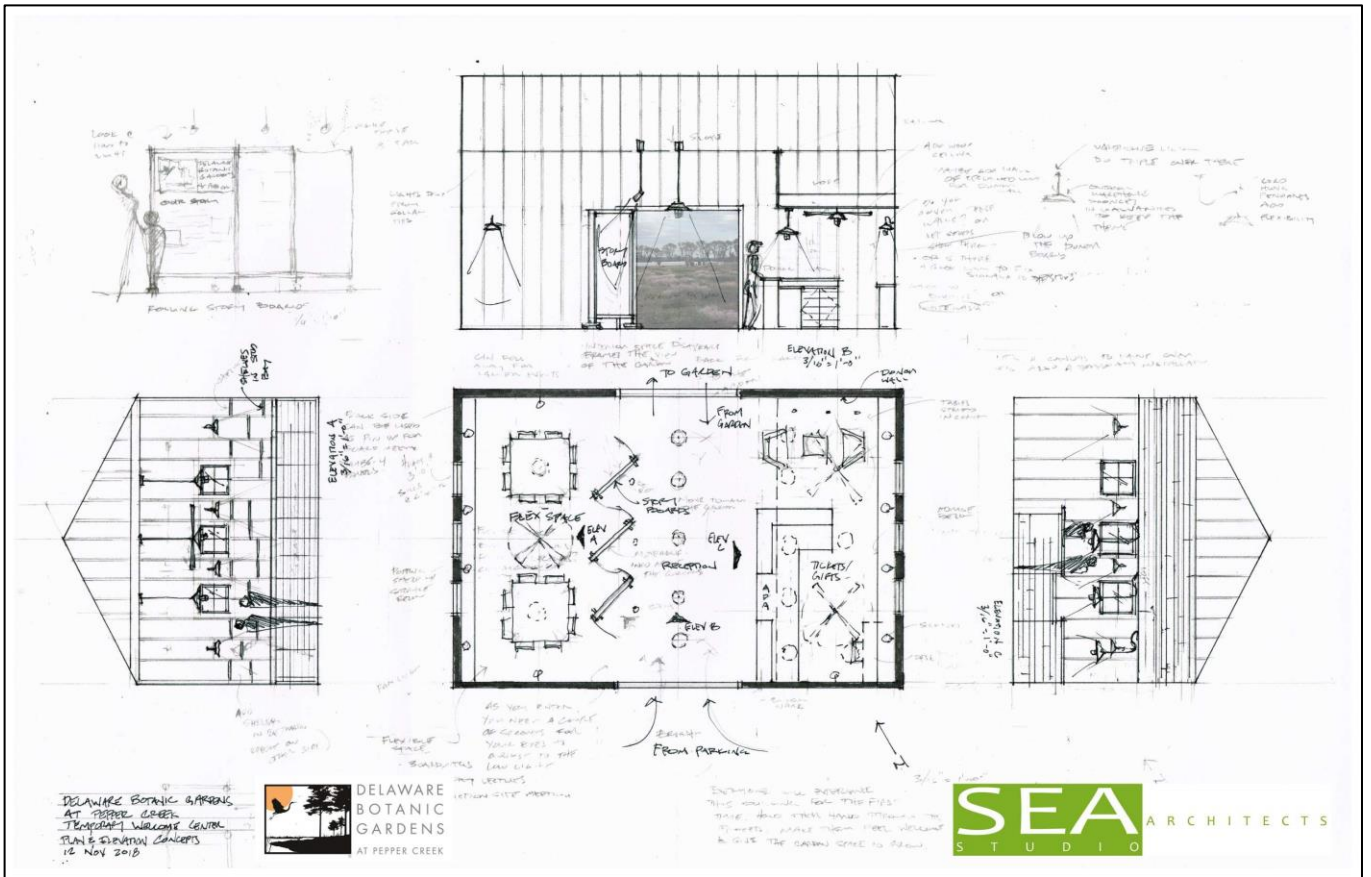
Scott received his Bachelor of Architecture degree from Virginia Tech in 2003. He is licensed in Delaware and Maryland and is certified by the National Council of Architecture Registration Boards. Scott is the President of the Delaware Chapter of the AIA and he serves on the Bethany Beach planning and zoning commission.

Scott presented a very flexible and open design pictured below. He stated, “The Welcome Center is definitely going to be the welcome mat for every visitor. The vision of this 20’ X 30’ cedar potting shed is industrial and rustic. The look is the old Cape Cod look with exposed studs.”

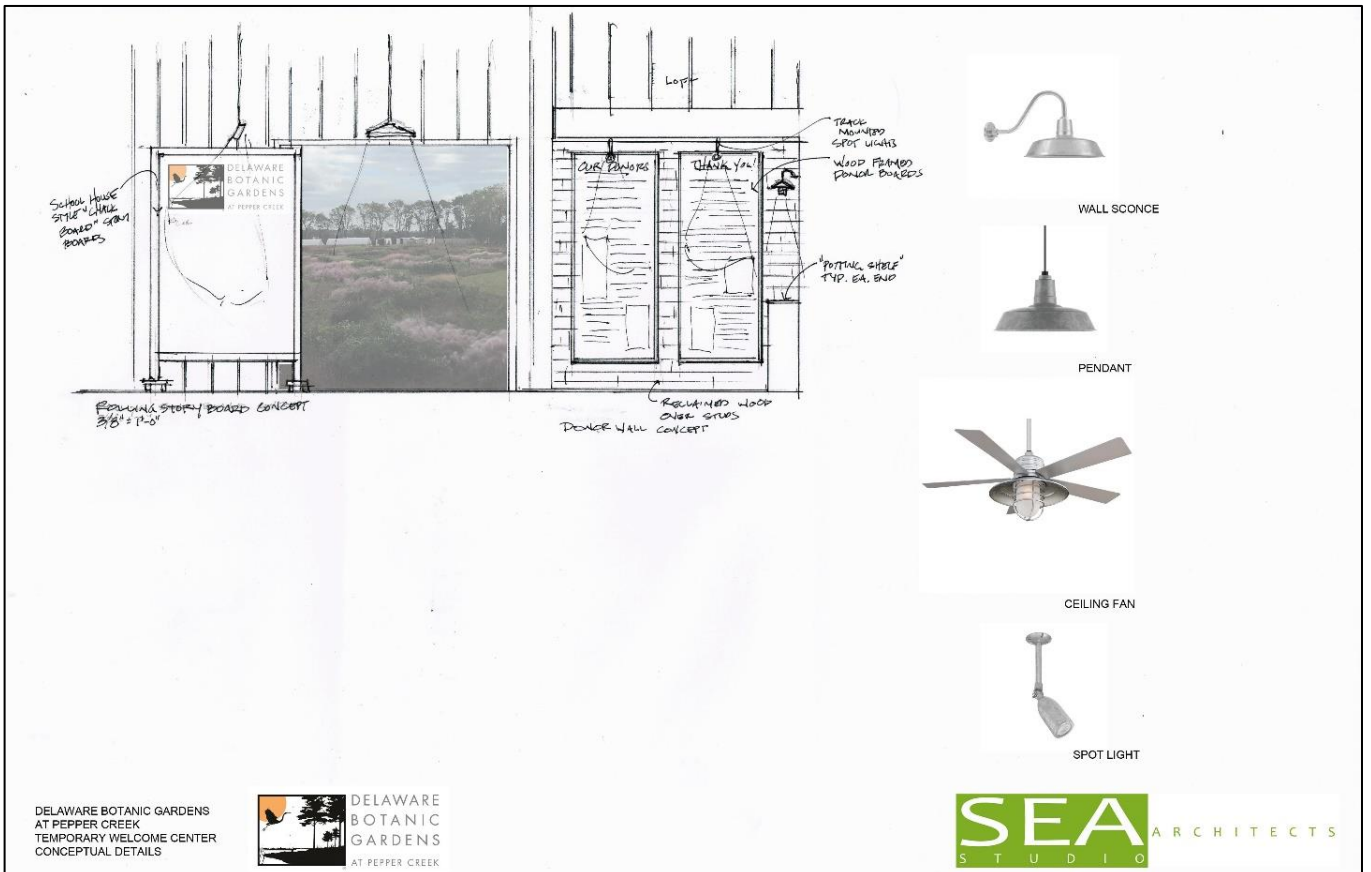
Scott summed up his thoughts saying, “Because the gardens are growing, the building should be modest, flexible and be able to grow with the gardens. It should not try to complete with the gardens.”



Scott and Jen Edmonston



SEA Studio Architects Furniture and Ticket Desk Design



SEA Studio Architects Story Board Design with Lighting and Fan Suggestions

Rodney's Back – Another example of “in-kind” support involved one of our original Dream Team members, Rodney Robinson. He is a respected landscape architect, who created the garden’s master plan in conjunction with other members of the Dream Team back in February 2016. He returned to DBG on December 1, 2018 after a “SOS” call from Ray Sander, who explained we had a rainwater-flooding problem with a low area that collected the water just north of the Meadow Garden. For two hours, Rodney and his trusty soil probe tested various areas in the Meadow and several areas adjacent to the Meadow and closer to the area, which could eventually become the large pond envisioned in later phases.

In short, Rodney and Sam Cashdollar, DBG Facilities and Grounds Manager, arrived at a solid cost effective “French Drain” solution.



Rodney Robinson testing soil composition

Thanks to Rodney and all who are working together to resolve this flooding issue with a new “French Drain.” Our partners just keep giving!

Education & Environment – This past year, DBG began to demonstrate our commitment to education and the environment. We hosted 32 Sussex Central High School’s juniors involved in the International Baccalaureate Program. They are science and biology students and their teachers praised the learning experience at DBG. They carried out several projects and used our Dogfish Head Learning Garden.



Gregg Tepper orients students from Sussex Central High School

Other visiting youth groups included 25 students enrolled in the Longwood Garden Intern Program. We also hosted a York, PA Girl Scout Troop 20566. The 18 Girl Scouts, their leaders and parents raised money for plants and built their own “Girl Scout Garden.” They planted 500 native plants and 4 redbud trees.

Speaking of trees. On September 20, thanks to a grant from the Delaware Forest Service, DBG volunteers planted 270 new trees along Piney Neck Road. The Delaware Forest Service's Urban and Community Forestry Program awarded \$5,000 to fund this tree planting.

The trees planted included 270 eastern red cedars, white oaks, chestnut oaks, loblolly pines and Virginia pines to provide an attractive and varied screen along the DBG road front.

Once the trees were delivered, our volunteers along with Gregg Tepper and Sam Cashdollar planted all the trees.



Brent Baker, Gregg Tepper and Kurt Schaab plant trees along Piney Neck Road

Entry Garden – The top DBG 2019 construction priority is the Entry Garden. It is a four-acre area on the west side of the gardens which includes the Piney Neck Road Visitors Gate entrance road, 180 parking lot spaces, turning circle - all leading to the Welcome Center. One of the issues we take seriously in this construction is to avoid damage to the trees near the parking lot. We are lucky that one of our volunteers is Jeremy Haggart a certified arborist. He is helping us avoid damage to the trees on the western border of the property. Based on his visit with us we are also adjusting the turnaround location so we don't take down so many trees.

Mark Davidson at Pennoni Associates, Inc. is our design engineer and Mike Peka of Bancroft Construction is the construction manager. The requests for proposals (RFPs) will be out for bids shortly. This is about a \$500,000 basic design.

Living Shoreline Project – We are proud of our 1,200 feet of Pepper Creek shoreline. We have now taken steps to preserve and improve this important natural shoreline by joining with The Center for Inland Bays (CIB) and DNREC in a water improvement project, which would begin in late 2019-2020.

In fact, both DNREC and CIB are very excited about this project. For example, DNREC wetlands staff have already visited DBG twice for a preliminary site analysis. In addition, Karen Steenhoudt, as part of her graduate work at Temple University, will do the shoreline design, plant selection, etc. - at no cost to DBG.

In short, DBG staff and volunteers can do most of the site work. In addition, CIB will manage the project. This project will cover half or 500 feet of the east woodland shoreline in phase 1. A special thanks to Carol Bason, who has worked hard on this grant request.

Board & Futures Team Update

News from Brent Baker, Board Secretary & Futures Team Chair

Policies – One of the Board of Directors' main jobs is to review and establish DBG policies. Since the last newsletter, the Board has voted and passed two major policies. They are briefly outlined here:

- **DBG Privacy Policy** – The main purpose of the DBG Privacy Policy is to protect all personal information including any financial transactions submitted on the DBG website or by other means to DBG. This information will not be shared or sold to any third party. Details on the DBG Privacy Policy are posted on the website at www.delawaregardens.org/privacy-policy.

- **DBG Gift Acceptance Policy** – The Gift Acceptance policy states in part, “Individual donations and/or gifts must be for charitable, scientific or educational objectives, subject to the purpose and intent of DBG, applicable law and Internal Revenue Service regulations.” It further states, “Individual donations and/or gifts and other distributions will not be accepted:
 - To support political campaigns or for lobbying.
 - To benefit any individual directly.
 - For the benefit of a specific individual, except as an award from a Scholarship Fund paid directly to the educational institution.
 - That result in any tangible benefit to the Donor, Grant Advisor, Successor and family member or related party.
 - That contain specific restrictions or stipulations.
- **Other Policies** – As we grow, DBG has to formalize various policies. Currently the Board is considering the following policies:
 - Naming Rights Policy
 - Integrated Marketing and Communications Policy
 - Volunteer Policy

Futures Team – The futures team is working at warp-speed to put together project/task lists to reach our goal of opening the garden gates in 2019. This is a complex process working with the project managers, Budget Committee and Board. The team helps shape the 2019 DBG budget and continues to track projects as we count down to opening. The Futures Team motto could well be, “No detail is too small to be listed and tracked.” For example, one of the project details is informational and interpretive garden signage.

Volunteers & Speakers/Tours Bureau Update

News from Carol McCloud, Vice President

Volunteers Welcomed – As DBG’s Volunteer Coordinator I am always looking for new volunteers. We are in need of more Garden Stewards at the gardens to help with our Garden Maintenance.

In the near future, we will also need, Docents, Hospitality Staff and Administration Staff. If you would like to volunteer, please go to our website at www.delawaregardens.org/sign-up-to-volunteer.

There are four basic volunteer categories:

- (1) **Garden Stewards** - Are the backbone of our daily planting, weeding and garden maintenance. If you like to get your hands dirty, this is the place for you.
- (2) **Docents** – Our Docents share their smiles and knowledge of the Gardens on our private tours. If you like to share information, walk backwards and meet new people, this is the place for you.
- (3) **Hospitality Staff** – Will be the first point of contact to the public. They will greet our guests in the Welcome Center, and provide guest services.
- (4) **Administrative Staff** – We have a variety of opportunities, depending on experience and the Garden’s needs, such as, correspondence, IT assistance, and general office duties, just to name a few.

Speakers – DBG has a Speakers Bureau. If you would like to have a speaker do a presentation for your organization, please contact me at carol.mccloud@delawaregardens.org. We request a \$250 donation/honorarium for our speakers. We also have a “tabletop” display, which we take to community events. There is no fee for the Tabletop display. We are eager to share our DBG story.

Tours - We offer private tours of the gardens. We request a \$250 donation for a private tour. Please contact me if you are interested in a private tour at carol.mccloud@delawaregardens.org.

Development Update

Crystal Trust Visit – On August 8, 2018, Pat Anderson, Director of the Crystal Trust, visited the garden for the second time as a prelude to the grant request DBG was making in the fall grant cycle. On her first visit in 2017, the first phase of the Meadow was just being planted. She was most impressed by the completed Meadow and the progress on the site’s infrastructure.

Welfare Foundation Visit – On September 28, 2018, Chris Grundner, President and CEO of the Welfare Foundation, visited the gardens for the first time. He was briefed by President Ray Sander, Executive Director Sheryl Swed, Treasurer Grant Watchorn, Board Secretary Brent Baker and Director of Horticulture Gregg Tepper. This visit was a prerequisite for the grant request that DBG was submitting for the fall grant cycle.

Fall Grant Results - DBG had its best capital fundraising year since 2015 when we received over \$900,000 including the \$750,000 Longwood Foundation grant plus 3 other grants for \$155,000.



Pat Anderson and Ray Sander



Ray Sander, Grant Watchorn, Chris Grundner,
Brent Baker and Sheryl Swed

This year DBG was awarded:

\$200,000	Crystal Trust
\$150,000	Welfare Foundation
\$125,000	Ellice & Rosa McDonald Foundation
\$100,000	State of Delaware Bond Bill
\$30,000	Crestlea Foundation
\$25,000	Delaware Community Foundation
\$20,900	Stanley Smith Horticultural Foundation
\$20,000	Marmot Foundation
\$20,000	Dogfish Head Learning Garden pledge
\$10,000	Strohminger Family Foundation
<u>\$4,751</u>	Delaware Forest Service
\$705,651	2018 Total

DBG is thankful for the continued support of the State of Delaware, leading regional foundations and now a national foundation. We will put these grants to work on completing the site for our Phase I, “Open the Garden Gates.”

How do you do it? – Recently, we gave a presentation to one of our supporting Foundations and the trustees asked how were you able to accomplish so much at DBG spending only \$3 million? We explained that we are able to build the gardens because of the many volunteers, supporters, and the huge amount of in-kind business donations in addition to a working pro bono Board of Directors.

DBG People in the News

Sheryl Swed – In the December 2018 issue of *Delaware Today* it was announced that, DBG’s Executive Director Sheryl J. Swed had been honored in the Annual Women in Business feature issue of the magazine. President Ray Sander said, “Sheryl was selected as one of the 41 Delaware women leaders representing a wide range of business enterprises. It is a great honor for DBG and Sheryl to be included with these other outstanding leaders and their organizations.” Sheryl was recognized for her professional accomplishments, leadership and vision at the Delaware Botanic Gardens. She is a founding member of the DBG Board, who is known for her tenacious drive and innovation. Upon receiving the news of her selection, Sheryl said, “I am grateful to members of the DBG Board and to the many people who have helped to move this legacy garden forward. The project is a success because of all of us, not just any one of us. Our volunteers, friends, donors and business partners are making it happen. Creating the garden from scratch is a team effort. We are all pulling together to get us to our 2019 public opening.



Sheryl Swed
Photo by Jim Coarse

Coastal Gardeners Adopt Piney Neck Rd – In the November 23, 2018 *Coastal Point* was an article, “Coastal Gardeners Adopt-A-Highway.” The photo showed 12 Bethany Beach Coastal Gardener members including DBG volunteers Donna Buono and Doug Isaac along with DBG member Steve Zimmerman. Jackie Cole, the cleanup chair said, “This Road is the one that leads to the Delaware Botanic Gardens, and it actually goes beyond that. We wanted to try to make Delaware clean approaching the gardens and keep our roads beautiful.” Our thanks to the Coastal Gardeners for a job well done!

Garden Design Magazine – One of the national publicity highlights of this past year was that DBG was featured in the spring 2018 issue of *Garden Design Magazine*. This recognition was unusual for a start-up garden. “A New Garden Takes Root,” two-page article featured “rock star” plantsman, Piet Oudolf. “How did a small wannabe garden snag Oudolf, renowned for New York City’s High Line and Chicago’s Lurie Garden?” the article asked. Well, you have to read the article to find out the answer. You can visit our website to read the article by clicking on this link www.delawaregardens.org/in-the-news.

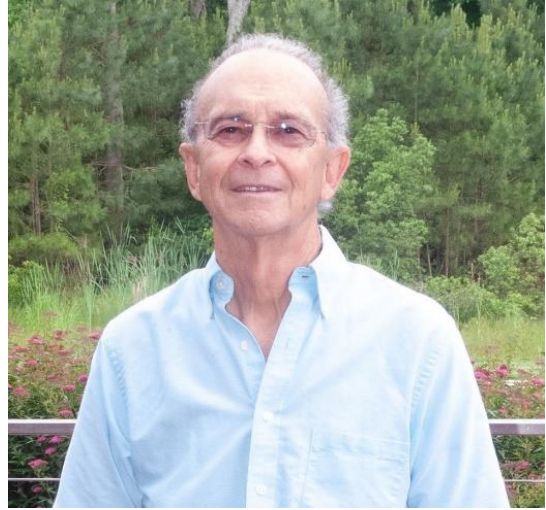
Contribute to DBG & Avoid Taxes

News from Ron Bass, Board Member

The Delaware Botanic Garden (DBG) must solicit funds not only to build the garden, but also to provide for maintenance of gardens as well as infrastructure. Building and maintaining a world-class garden is costly, but the benefits to individuals and the community are great.

One way to contribute to DBG and provide tax relief is through your Individual Retirement Account (IRA), which is subject to a Required Minimum Distribution (RMD). Don't let your eyes glaze over from this jargon, the process is quite easy and painless and could save you from paying some taxes.

This payment method is known as the IRA Charitable Rollover. It became a permanent payment method in December 2015.



Ron Bass

Anyone over 70 ½ who has invested in an IRA has the ability to make a tax-free gift directly to a charity from their IRA. Anyone over 70 ½ *must* withdraw what is called a “Required Minimum Distribution” from their IRA.

A gift from an IRA provides a unique tax advantage. When you withdraw money from an IRA, you normally would pay income taxes on that amount, but when you transfer money directly from an IRA to a non-profit organization like DBG, you do not have to pay taxes on the amount you give. In addition, you receive a credit for the amount you transfer against your Required Minimum Distribution.

How do I transfer my RMD to Delaware Botanic Gardens and avoid taxes?

The process is a simple one. Simply contact your IRA's plan administrator in *writing*, requesting a transfer from your IRA to the Delaware Botanic Garden (DBG). Your administrator may have a form that directs such a transfer; if so, he or she can provide the form on-line. Your request should note your plan account number, the amount you wish to transfer, Delaware Botanic Garden's tax ID number, which DBG will provide along with a contact person at the garden. You should also ask your plan administrator to let DBG know when the transfer takes place. Remember you must request that the check be payable directly to the Delaware Botanic Garden and *not* to you.

What if I already took my 2018 Required Minimum Distribution or want to do this in 2019?

You can plan for saving taxes in 2019 right now by following the instructions above. We look forward to working together with you to support DBG and to help you give in an easy and tax-savvy way.

NOTE: The above references an opinion and is for information purposes only. It is not intended to be investment advice. Seek a duly licensed professional for investment advice.

DBG Giving – All Hands on Deck

We need you – In 2019, there is still much to do in our fund-raising challenge. We hope you will consider how you can support us financially to help open the gates.

Here are some giving ideas:

- Become a sponsor of our “Open the Garden Gates” events
- Make a donation using our website (www.delawaregardens.org/make-a-donation/)
- Create an employer matching gift
- Donate appreciated stock
- Give a gift of a DBG Membership
- Become a Sustaining Friend of Garden (Instead of a single annual donation, consider a sustained gift of a monthly amount of \$10, \$25, \$50 or \$100. It adds up over time.
- Make a donation from your IRA

Naming Opportunities

We have some excellent naming opportunities. As we open the garden gates in 2019, please consider naming one of our beautiful gardens that are listed below. Please contact Sheryl Swed at sherylswed@delawaregardens.org or 202-262-9856 if you are interested or have any questions.

- Benches
- Entry Garden
- Visitor Center Arbor
- Folly Garden
- The Gallery
- Dune Gardens (3)
- Interior of Welcome Center
- The Knoll
- Piet Oudolf Meadow Garden (3 sections)
- Welcome Center Garden
- Woodland Edge Garden
- Pathways

One more important opportunity –If you would like to underwrite this newsletter and have your logo included on page one of our quarterly editions, please contact Sheryl Swed at 202-262-9856 or sherylswed@delawaregardens.org.

Garden Naming Opportunities



DELAWARE
BOTANIC
GARDENS
AT PEPPER CREEK



Gardens inspired by Inland Dunes—a rare habitat found in western Sussex County along the Nanticoke River. A garden to inspire visitors to preserve Delaware’s native landscapes.

At the Delaware Botanic Gardens, we have preserved and enhanced the native woodlands and we have turned the former farm field into a palette of color painted with native plants. But with these gardens, the **Dune Gardens**, we have created a place to plant and nurture rare native plants that once flourished on Inland Dunes along the Nanticoke River in Sussex County—places formed by glaciers 30,000 years ago when Native Americans first inhabited North America.

- The Dune Gardens overlook the stunning Piet Oudolf Meadow
- On these sandy ridges are planted the rare wild lupine, box huckleberry, little bluestem grasses and moss phlox, our native American holly and low bush blueberries.
- If you plant them, they will come—wild lupine attract the globally-rare frosted elfin butterfly—the caterpillar feeds on the lupine’s leaves, and the butterfly pollinates the lupine.
- Suggested to us by the Delaware State Botanist, these Dunes uniquely support the DBG mission to preserve and protect the natural biodiversity of Delaware



At each Dune Garden, there will be a plaque recognizing the donor who made the garden possible. The two Dunes can be named individually or by separate donors.

To learn more about this naming opportunity contact:
Sheryl J. Swed
Executive Director
sherylswed@delawaregardens.org
202-262-9856



DELAWARE
BOTANIC
GARDENS
AT PEPPER CREEK



Along the woodland path, just as Pepper Creek comes into view, a stone wall leads to fieldstone steps up onto the Knoll—an intimate garden with a lovely view of Pepper Creek. The Knoll Garden is off the beaten path, a place of cool shade and quiet.

From this high perch under towering oaks, guests can enjoy the view of the creek through the trees—sweet gum, maples, American Holly, sassafras and dogwood—and beneath those, native ferns and azaleas and spring ephemerals. In summer, **The Knoll** is a spot to rest in the cool shade, in springtime, a garden of wildflowers, in fall, a kaleidoscope of color and in winter, the tracteries of trees against the water and sky.

- The Garden is entered through a stone wall up a set of hand-crafted stone steps up to a bench overlooking Pepper Creek.
- On the forest floor, wood fern, crested iris, blue wood aster and other native wildflowers and ferns, below an understory of redbud and flowering dogwood.
- A 150+ year old oak stands on the Knoll's western edge
- On the Knoll, adjacent to the garden is one of the Delaware Botanic Gardens bird's nest sculptures



At the Knoll Garden, there will be a plaque recognizing the donor who made this garden possible.

To learn more about this naming opportunity contact:
Sheryl J. Swed
Executive Director
sherylswed@delawaregardens.org
202-262-9856

In the Garden

News from Gregg Tepper, Director of Horticulture



Gregg in the Garden

Reviewing 2018, we had some amazing garden projects and endeavors at Delaware Botanic Gardens. In February, many of the garden areas, such as the Meadow, were only partially completed and many other areas, such as the Dogfish Head Learning Garden, were yet to be created.

By the end of February, the Learning Garden was staked as well as the outline for the Inland Dune Gardens, the metal structures were in place for our Hoop Houses for growing plant material, and the plants that would be planted in the Meadow later in the year were in their infancy at various nurseries.

On March 14, Envirotech began construction of the Wetland Outdoor Classroom and new plants were going in the Folly Garden, the Learning Garden wetland was well under way, the end sections and doors were on the Hoop Houses and the main line to the Woodland Garden irrigation system was being laid.

In April, the electric conduits were being installed, the container was outfitted with storage cabinets and early spring weeding was happening. The end of April brought many thousands of plants being delivered which were soon planted in the first phase of the upper and lower sections of the Meadow. On May 2, 2018, we finally had electricity thanks to Delaware Electric Coop and Nickle Electric.

May 3-5 we celebrated Piet Oudolf's visit and his great pleasure with a job well done. The planting brought volunteers from near and far and, once again, teamwork made it happen!

By late June, we were planting the second phase in the Meadow and our volunteers undertook this once again with verve and vigor and, though it took almost two weeks, but we got it done!

The summer heated up in July and August, the Garden grew, and SO DID THE WEEDS! The hoop houses were covered and outfitted with benches, more planting and weeding continued. Then with the September 6 fall fundraising event approaching, the pressure was on us to have the Garden looking its best. We waged a war on weeds and a HUGE effort was made. The results helped create a successful event!

The fall brought cooler temperatures and the regular volunteer days saw on-going duties of grass planting, mulching, weeding, nest-building, and other duties throughout the Garden areas.



April Meadow Planting as photographed



(l/r) Tricia Precht, Toni Filiaggi, Trudy Guetler, Craig Haggerty, and Linda Lynn pick up sticks and rebuild the nest sculpture on the Knoll. Photo by Gregg Tepper

Throughout this all in 2018, our volunteers and staff could be counted on to see that tasks were handled, complete with smiles, and we can be most proud of the immense progress made.

We look now to further success in 2019! This winter we will work on the Woodland paths readying it for future public access, weeding in the Meadow and Woodland of winter-hardy weeds and we will be raising new plants in the hoop houses for spring planting in the woodland and woodland border gardens.

Mid and late March will be the Meadow cut back and the much-anticipated Anderson Holly Collection of 36 trees and shrubs will be installed.

The spring brings us a very exciting preview of the Folly Garden, which we have worked hard on to add more bulbs and spring-blooming perennials this past year. There is a lot happening in 2019 to ready the Garden for its presentation to the public and we are looking forward to you all being a part!

Happy New Year!

The Delaware Botanic Gardens Board of Directors hopes you have a wonderful holiday season and wishes you a great 2019. DBG looks forward to opening the garden gates in 2019 and hopes that you open many new exciting pages in your lives.

It is not too late to donate with an end of year gift to DBG. You can make a donation by completing the pledge form on the next page and mailing it to DBG or on our website at www.delawaregardens.org/make-a-donation/

You can also help “Open the Garden Gates” by becoming a member or renewing your membership to DBG on our website at www.delawaregardens.org/members/



(l/r) Brent Baker, Ron Bass, Carol McCloud, Grant Watchorn, Gregg Tepper, Sheryl Swed, Bob Batley, Ray Sander and Tom Bason; not pictured Peter Carter and Ruth Clausen

Let's work together to Open the Garden Gates

All photographs that are not attributed were taken by Ray Bojarski



DELAWARE
BOTANIC
GARDENS
AT PEPPER CREEK

www.delawaregardens.org

Capital Campaign Gift/Pledge Form Donor Information

Please print name(s) to be used in all acknowledgements: _____

Email 1: _____ Email 2: _____

Home Phone _____ Cell Phone: _____

Company/Foundation (If applicable) _____

Home Address: _____

City: _____ State: _____ Zip code: _____

Signature 1: _____ Date: _____

Signature 2: _____ Date: _____

My employer will match this gift/pledge My employer's matching gift form is enclosed Please keep this gift/pledge anonymous

Gift/Pledge Information

I/we pledge a total of \$ _____ to be applied in its entirety to Delaware Botanic Gardens. I/we understand that Delaware Botanic Gardens is relying on the timely receipt of all pledge payments.

A single gift. Payment information is below

Equal annual payments of \$ _____ over 2 3 years; Start date _____

This gift is in honor of _____ or in memory of _____

Check Information

Enclosed is my check for a gift of \$ _____ made payable to Delaware Botanic Gardens

Credit Card Information.

Please charge my gift to my credit card. Visa MasterCard American Express

Delaware Botanic Gardens has authorization to automatically charge my credit card when scheduled payment is due.

Cardholder's Name: _____

Credit Card #: _____ Expiration Date: _____ CVV# _____

Billing Address (if different from above): _____

Cardholder's Signature: _____ Date: _____

Please contact me regarding: Gifts of Appreciated Stock Naming opportunities

Planned giving opportunities Memorial Gifts

Please return to: Delaware Botanic Gardens
P. O. Box 1390
Ocean View, DE 19970



DELAWARE
BOTANIC
GARDENS
AT PEPPER CREEK

Copyright © 2012–2018 Delaware Botanic Gardens, Inc. All Rights Reserved
P.O. Box 1390 | Ocean View, DE 19970
Member, American Public Gardens Association